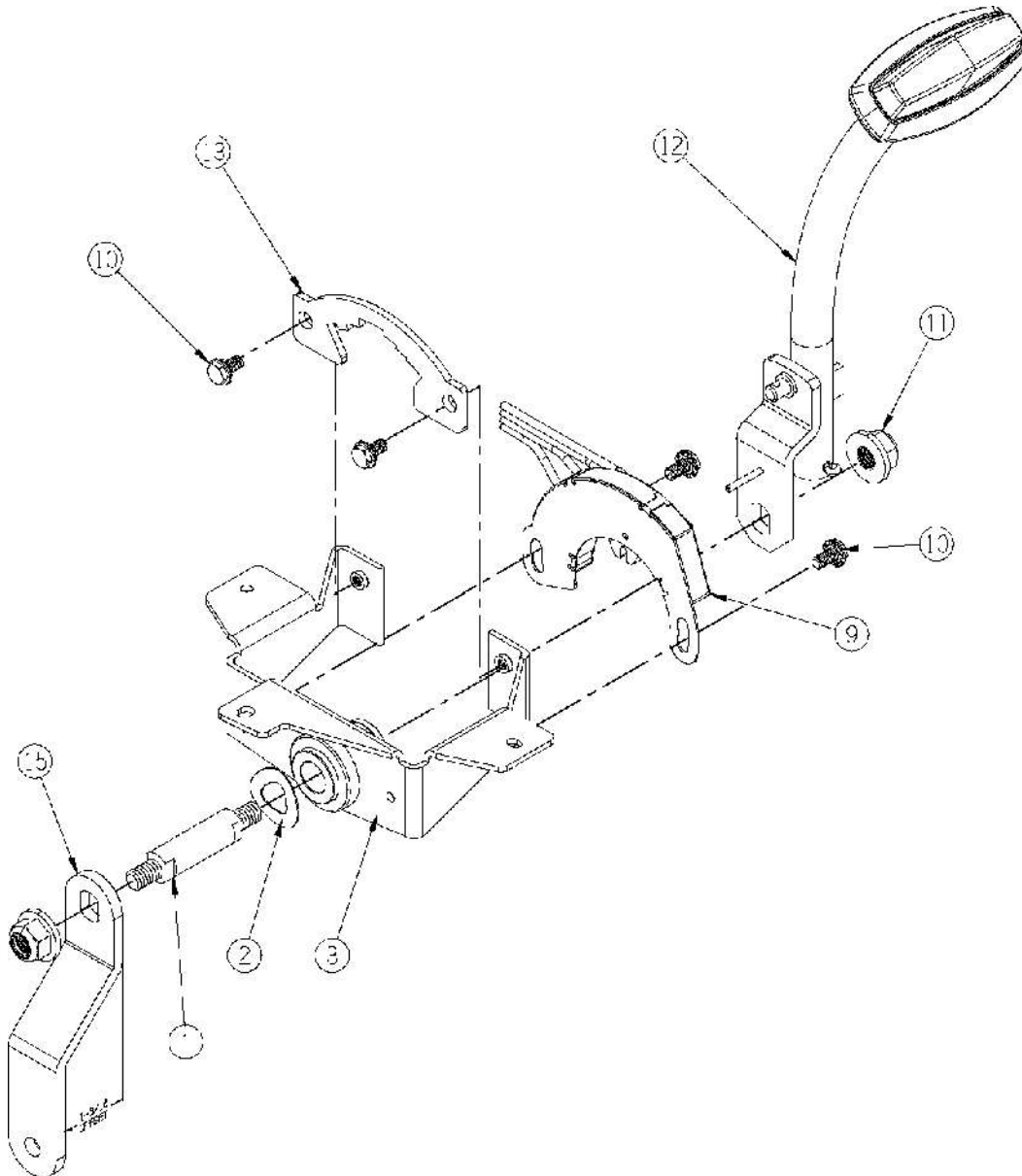




ROD LINKAGE #SW280-RCT & SW280P-RCT

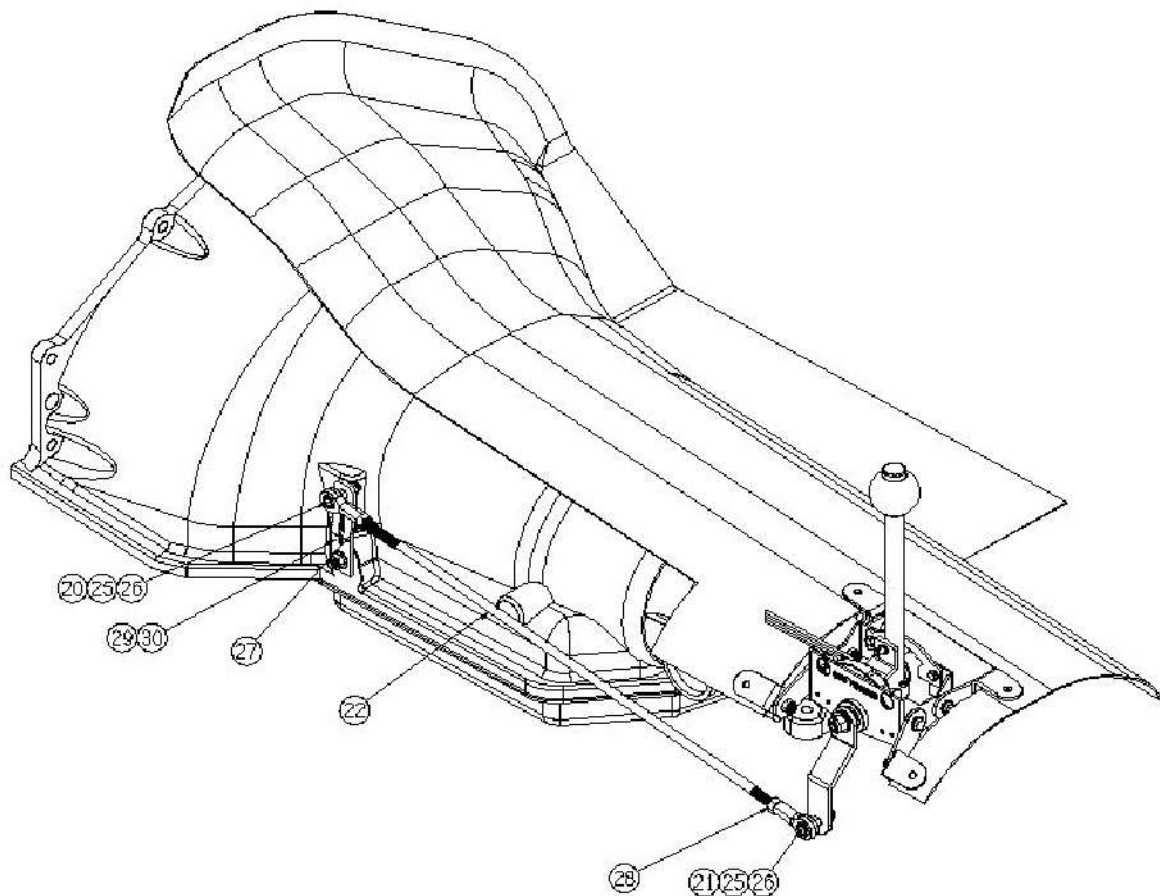
SHIFTWORKS® uses 5/16 inch linkage components with **left and right hand threaded ends**. The value of using this combination is that the final adjustment can be made by simply turning the rod clockwise or counter clockwise with the linkage installed to achieve the best fit. Many combinations of rod length are possible by shortening and combining the linkages included. **Use the jam nuts to tighten the linkage.**

EXPLODED VIEW



ROD LINKAGE

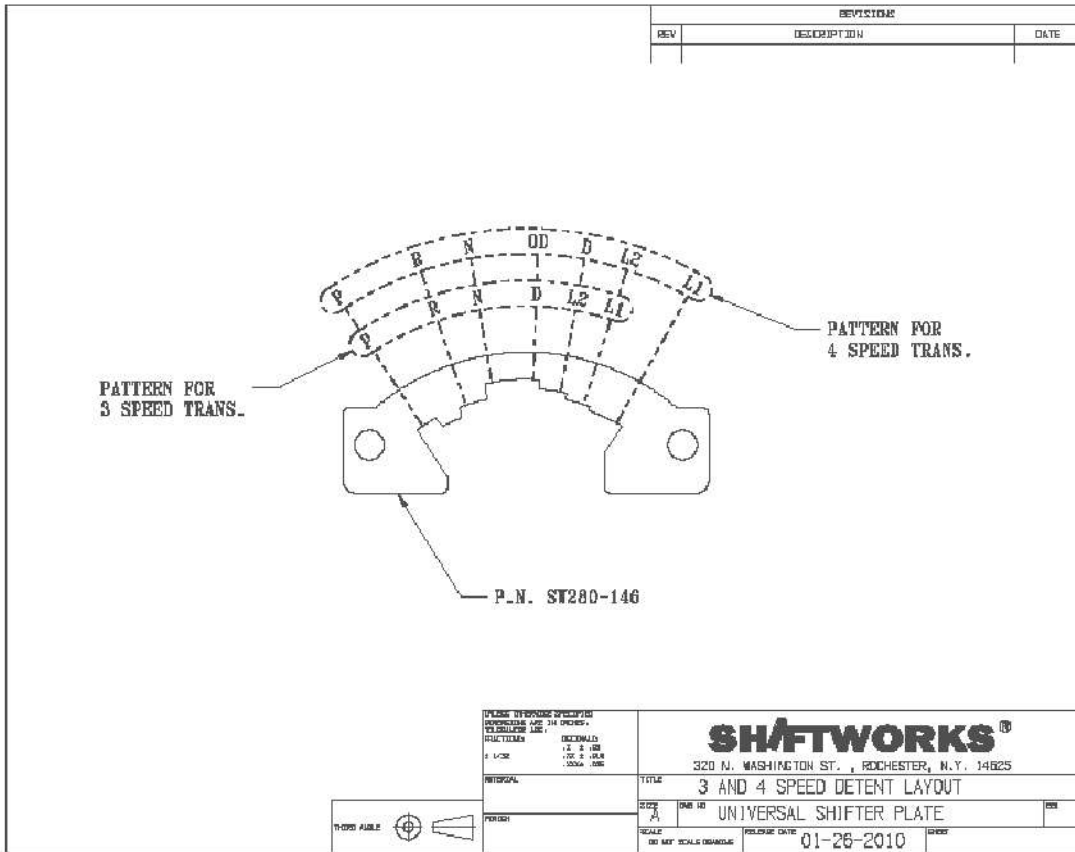
TYPICAL INSTALLATION



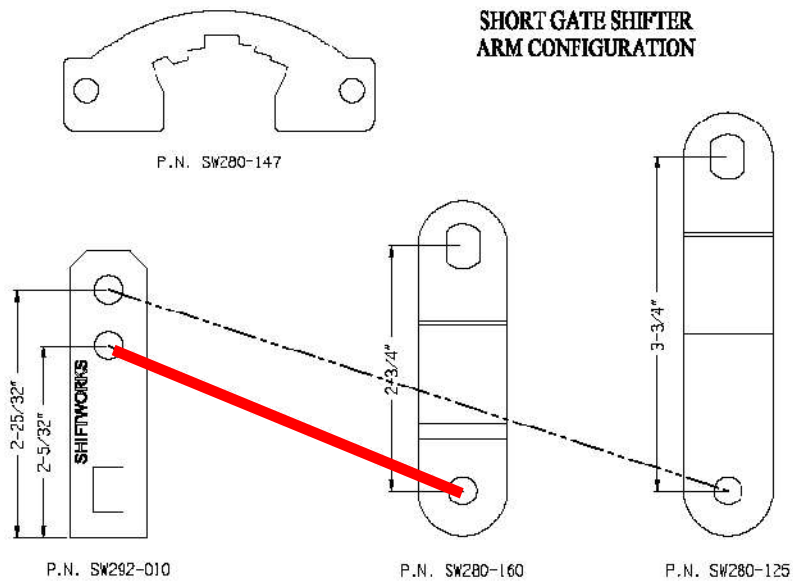
- Remove heavy washer on outside of shifter base and replace with offset shift arm. **Throw away the Heavy Washer. Do not reuse.**
- Put transmission control arm on pointing up, with SHIFWORKS® name facing out.
- Use **LOWER** hole for the shorter shift arm attached to the shifter. **See Diagram.** The Upper hole is used with longer shift arms (part #15/16) not normally supplied.
- The rod linkage can be shortened if necessary. Components are RIGHT and LEFT hand threads. Diagram is illustrative only.
- Adjust detent stops by spinning rod linkage to shorten or lengthen throw.
- **Neutral Safety/Back-up Switch.** Purple wires are for Neutral safety and Green and Pink wires are for back-up lights. If pre-installed, then the switch is pre-set. If not, then adjust for Back-up lights first, and then rotate switch to suit.

POWERGLIDE: Use the original PowerGlide transmission range select lever for **console shift** cars. Column Shift cars used several different lever styles and you may need to replace the Range Select Shaft. If your PowerGlide was originally a console shift cable shift transmission or if you are missing linkage parts, contact Shiftworks.

TH ONLY, NOT for PowerGlide
Shift Gate Construction – TH Only PG=P R N D L



Select Correct Linkage Connection Points



SHIFTWORKS 4005 W. Reno Ave, Unit E, Las Vegas, NV 89118 702-895-6812
WWW.SHIFTWORKS.COM